



INSTRUCTION SHEET FOR TOOL #1664

SHIFTER SHAFT BUSHING REMOVAL & INSTALLATION PROCEDURE

SHIFTER SHAFT SLEEVE TOOL

Use to upgrade to latest shifter assembly for 5-speeds, 1980-99 Big Twins, and 1980-2000 FLHT, FXR, and FXD.
Use to replace shifter sleeve for 5-speed 2000-present FXST, 2001-present FLHT, and FXD.

INSTRUCTIONS

1. For removal of transmission gear set see H-D® service manual for year and model application before removing and installing shifter shaft sleeve.
2. For removal of existing sleeve in transmission case. Insert Remover Pilot (1) No.1664-1 into sleeve I.D. as shown in Figure 1. Drive out sleeve towards inside of case using a 30 oz. brass hammer.
3. Clean inside of case and check sleeve hole for any burrs or metal debris.
4. For installation of new sleeve, lube the O.D. and I.D. of sleeve, also Installer Pilot Tool (2) No.1664-2. Then lube thrust washers (4), bearings (3) and allen bolt (2).
5. Slip onto allen screw one lubed thrust washer, then lubed bearing and then the last lubed thrust washer. Then from the outside of the case slip into the case sleeve hole.
6. Install the lubed sleeve (No.34114-79) onto No.1664-2 Installer Pilot (2) and from inside of case locate and thread onto allen bolt as shown in figure 2. Tighten by hand to align sleeve to hole, then by using a allen wrench, and box wrench, as shown. Tighten allen until bushing is as far as it will go. Bushing should be flush with counterbored hole.

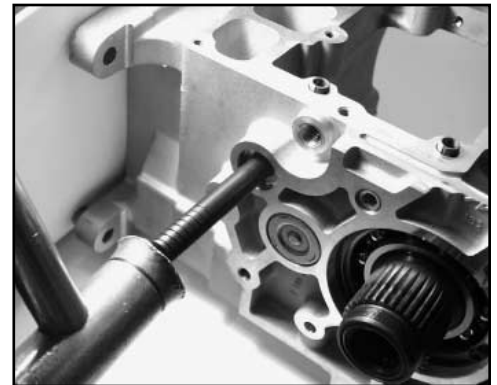


Figure 1

Figure 3

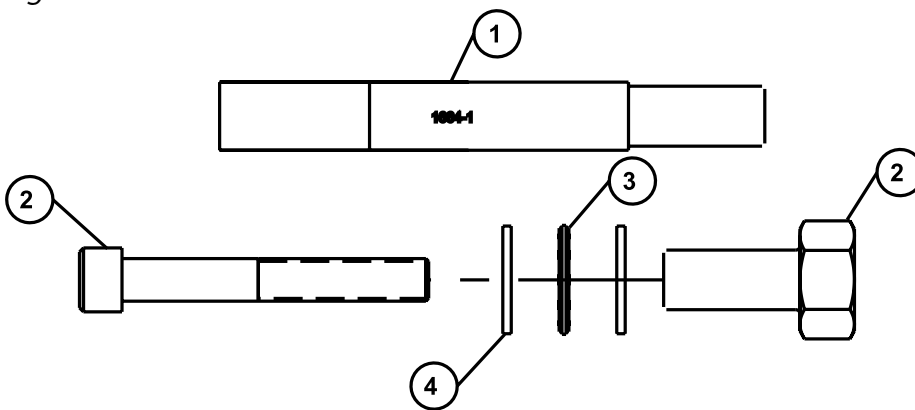


Figure 2

NO.	QTY.	DESCRIPTION	PART NUMBER
1	1	REMOVER, SHIFTER LEVER,	1664-1
2	1	INSTALLER, SHIFT LEVER,	1664-2
3	1	BEARING, THRUST	1663
4	2	WASHER, THRUST	1662
5	1	5/16-24 x 2 1/4" SHCS	1661

CAUTION: WEAR SAFETY GLASSES. EXCESSIVE FORCE MAY DAMAGE PARTS! SEE JIMS® CATALOG FOR OVER 100 OTHER TOP QUALITY PROFESSIONAL TOOLS. THE LAST TOOLS YOU WILL EVER NEED TO BUY.

"From The Track... To The Street!"

555 DAWSON DRIVE, CAMARILLO, CA 93012 • PHONE 805-482-6913 • FAX 805-482-7422