



A Division of Thiessen Products, Inc.

## INSTRUCTION SHEET FOR #2243

### CAM SEAL REMOVER & INSTALLER

USE ON BIG TWIN 1970-1999 INCLUDING AFTERMARKET SINGLE CAM



#### TO REMOVE SEAL

1. Refer to H-D® Service Manual to remove sensor plate and rotor.
2. To remove old seal, install tool to inside of cam cover using (2) 8-32 No. 2297 screws, using a 9/64 Allen wrench. (see diagram)  
Apply a small amount of lube to screws.
3. Rotate cup to expose the (2) 1/8" holes, preferably vertical at 12 and 6 o'clock. Turn in center screw No. 3 with a 3/16 Allen wrench, until cup No. 4 gently bottoms onto face of seal. Apply a small amount of lube to screws. Install the 2 self tapping screws No. 2287, into the two 1/8" holes. Using pressure, start self tapping screws. Tighten screws just so the head of screw makes contact with tool (sometimes a light hammer tap will help start the screws).
4. Once tight turn out center screw, counter clockwise, removing seal.

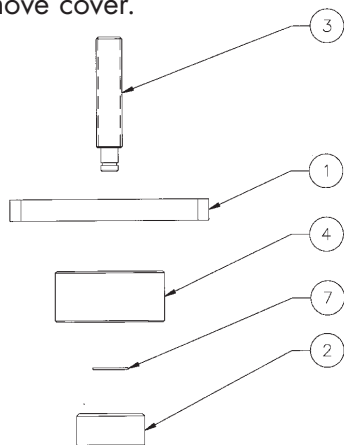
#### TO INSTALL SEAL

1. Apply a small amount of oil on the inside lip of seal, and center seal over hole and cam. Install tool to inside of cam cover using (2) 8-32 screws No. 2297. Apply a small amount of lube to screws.
2. Center cup No. 4 over seal. Turn center screw in clockwise until cup bottoms on cover.

#### TO REMOVE CAM COVER

This tool can also be used to remove cam cover without prying.

1. Install cup No. 2 with counter bore towards tool. (Flat side toward cam) Make sure all bolts are removed from cam cover. Install tool with the (2) 8-32 screw to inside of cam cover. Turn center screw in clockwise slowly to remove cover.



#### PARTS AVAILABLE SEPARATELY

No.	Qty.	Description	Part No.
7	1	CLIP	2304
6	2	SCREWS (NOT SHOWN)	2297
5	2	SHEET METAL SCREW (NOT SHOWN)	2287
4	1	CUP, INSTALLER & REMOVER	2243-4
3	1	SCREW, INSTALLER & REMOVER	2243-3
2	1	CAP	2243-2
1	1	PLATE, INSTALLER & REMOVER	2243-1
	1	INSTRUCTION SHEET	2243-IS

**CAUTION:** WEAR SAFETY GLASSES. EXCESSIVE FORCE MAY DAMAGE PARTS!  
SEE JIMS® CATALOG FOR OVER 100 OTHER TOP QUALITY PROFESSIONAL TOOLS.  
THE LAST TOOLS YOU WILL EVER NEED TO BUY.

*"From the Track... To the Street!"*

555 DAWSON DRIVE, CAMARILLO, CA 93012 • PHONE 805-482-6913 • FAX 805-482-9224