

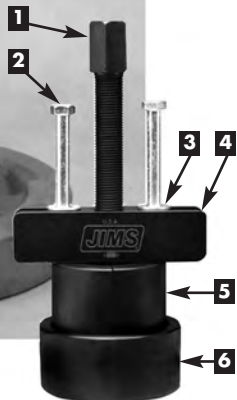
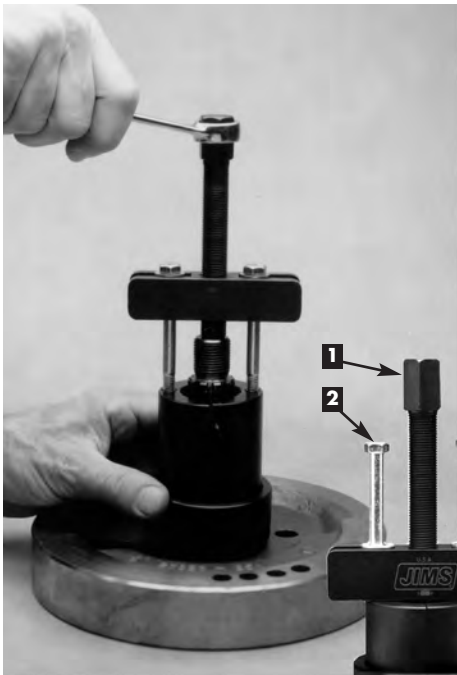


A Division of Thiessen Products, Inc.

INSTRUCTION SHEET FOR No. 1045-TS

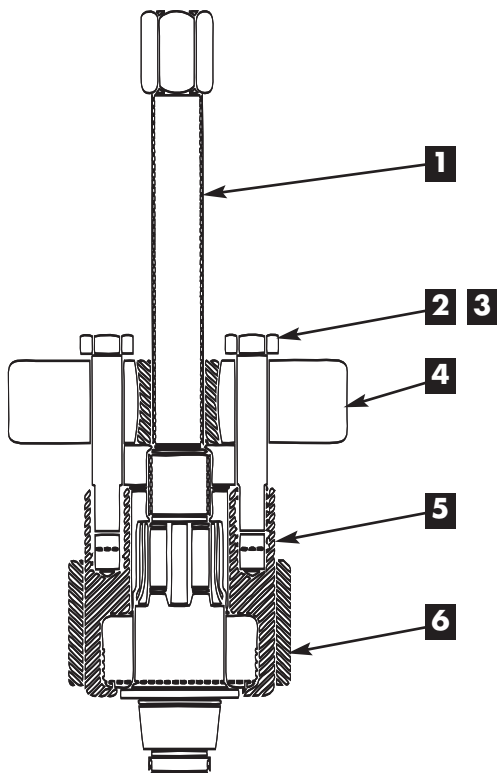
TIMKEN BEARING REMOVER

USE ON ALL BIG TWIN 1955-1985 STOCK FLYWHEELS.
USE ON BIG TWIN 1955-2002 AFTERMARKET FLYWHEELS.



Use to remove Timken® bearing from sprocket shaft without removing shaft from flywheels (CAUTION: On 1986-present, H-D® flywheels, you may need to modify left flywheel to install tool behind bearing). JIMS No. 1709 is designed for 1986-2002 flywheels with integral sprocket shaft.

1. Refer to H-D® Service Manual for disassembling crankcase, and use JIMS® tool No. 1047-TP to disassemble cases.
2. With flywheels installed on a Rowe®, flywheel rebuilding jig, sprocket shaft facing up and clamped tight in vice.
3. Install the two halves, No. 1045-TS-1, with pulling edge under the bearing. Slip ring No. 1045-TS-2 over the two halves.
4. Lube the threads of bolts, No. 2012, slip one washer, No. 2014, over each bolt. Align puller bar over the bolt holes in top of the two halves, thread in both bolts the same amount as far in as possible.
5. Lube threads and tip of screw, No. 1024, thread through puller bar until bearing is pulled from sprocket shaft. (To protect the end of sprocket shaft, the use of JIMS® hard end cap No. 1048, is optional).



PARTS AVAILABLE SEPARATELY

| No. | Qty. | Description | Part No. |
|-----|------|-----------------------------|-----------|
| 1 | 1 | SCREW | 1024 |
| 2 | 2 | BOLT | 2007 |
| 3 | 2 | FLAT WASHER | 2014 |
| 4 | 1 | PULLER BAR | 2013 |
| 5 | 1 | BEARING HOLDER - TWO HALVES | 1045-TS-1 |
| 6 | 1 | RING | 1045-TS-2 |

CAUTION: WEAR SAFETY GLASSES, EXCESSIVE FORCE MAY DAMAGE PARTS OR TOOLS.

"From the Track... To the Street!"